

Inspiration

The Making of M Suites

M
SUITES



M Suites is the culmination of projects to date by the Majestic Hotels Group, a name that has become synonymous with quality, originality and futures thinking. The design and build of this new hospitality offering draws inspiration from the historical and aesthetic environment of North Adelaide in particular, and South Australia and its regions more broadly.



Every touch is deliberate





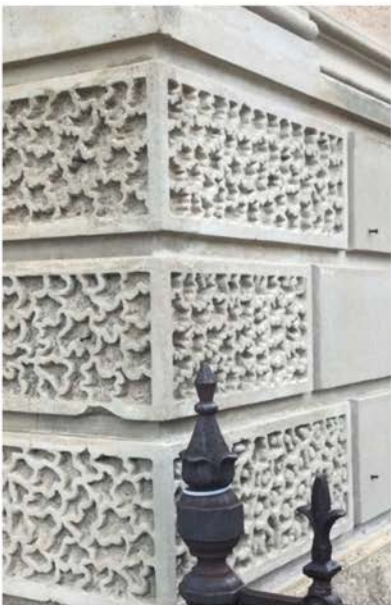






Attention to detail and craftsmanship are pivotal in M Suites' design





Inspiration from our rich local history

North Adelaide is steeped in the history of South Australia. The nearby Wellington Square, for example, is named after the first Duke of Wellington, who is credited with securing the passage of the *South Australian Foundation Act* through the British House of Lords in 1834. This, of course, made the founding of South Australia possible.

St Peter's Cathedral is a short stroll down the hill toward the city. A little-known historical fact is that an endowment to build the cathedral came from a friend of the Duke of Wellington—the English philanthropist and devout Anglican Angela Burden-Coutts. The richest woman in England at the time, she was the first woman raised to the peerage for public services.

History can be found up and down North Adelaide's wide tree-lined streets and meandering laneways, with heritage-listed grand houses, row cottages, churches, pubs and green squares combining to give an extra dose of character that other suburbs lack. No question, then, about the precinct's Heritage Conservation Zone status.





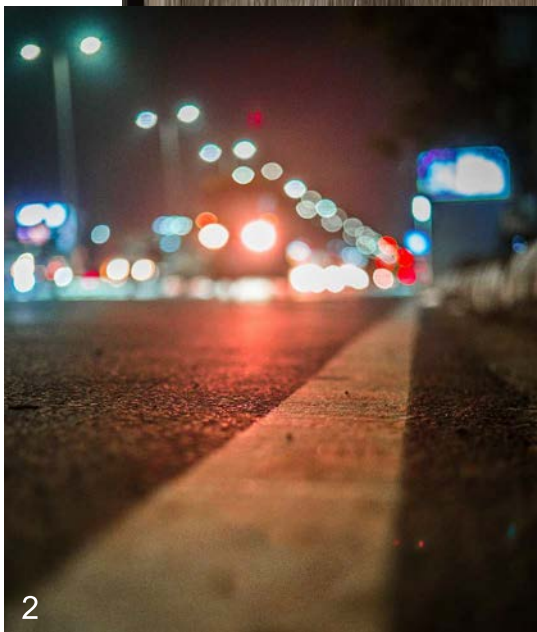








1

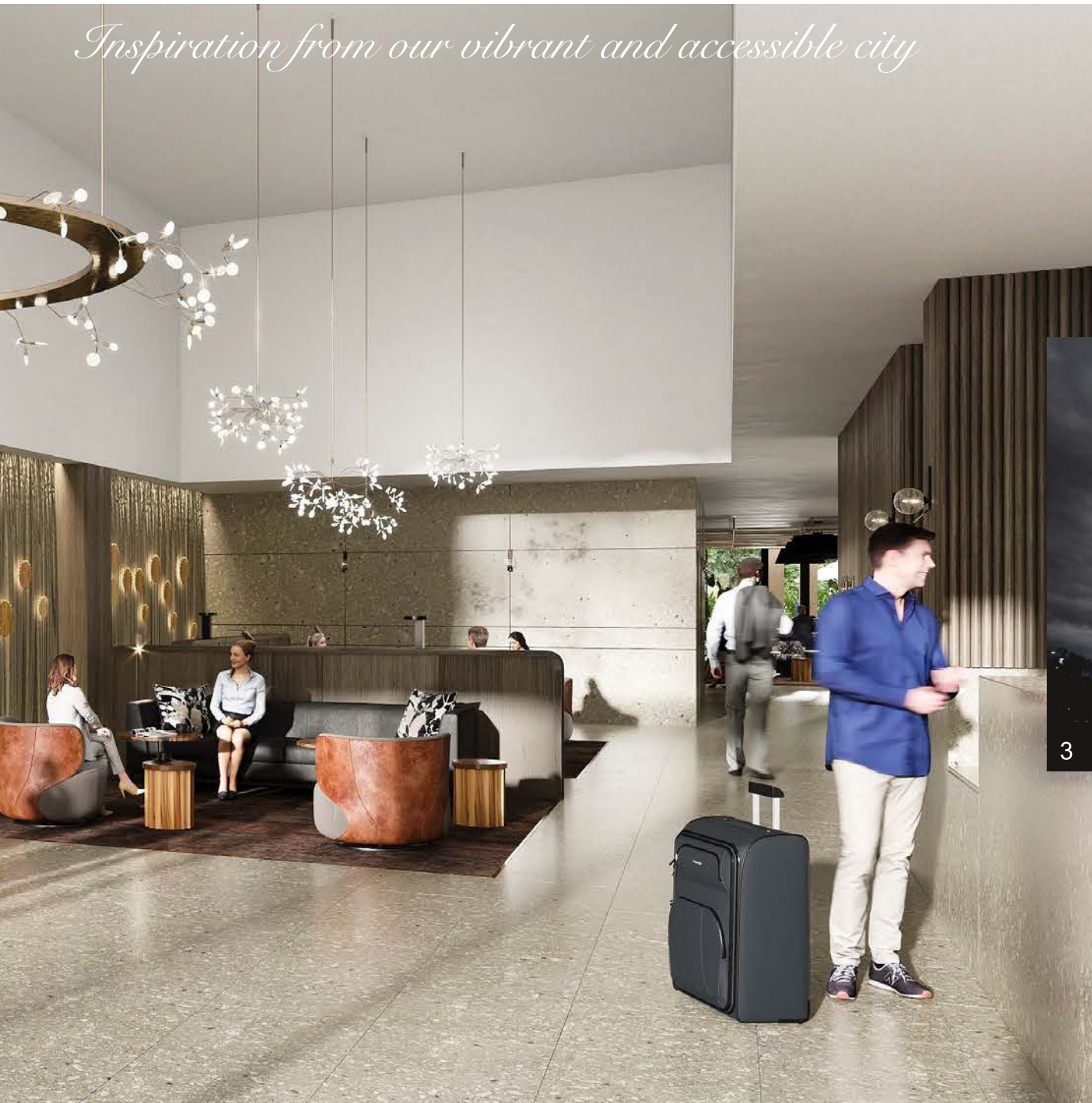


2



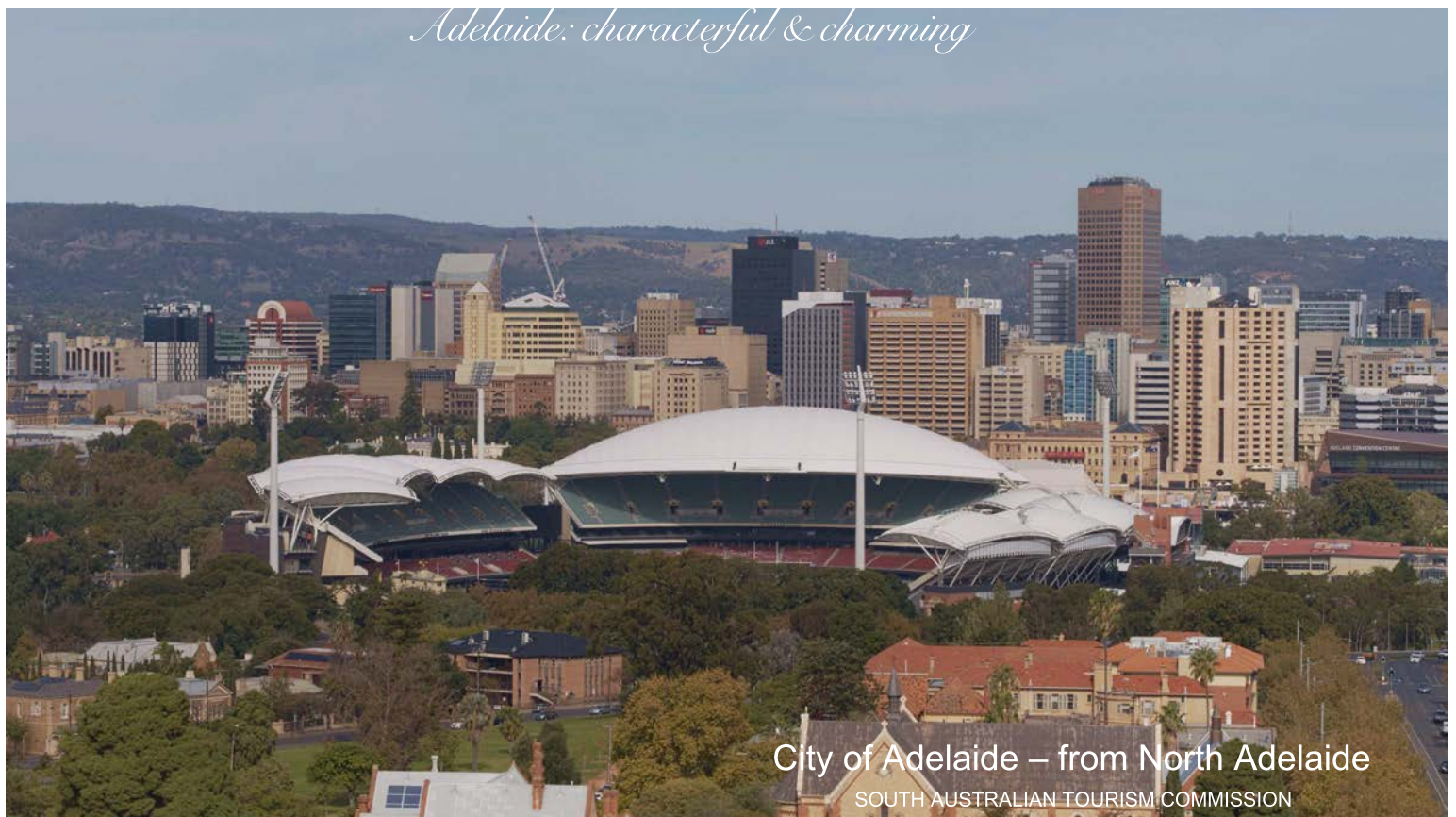
Adelaide: an immersive oasis

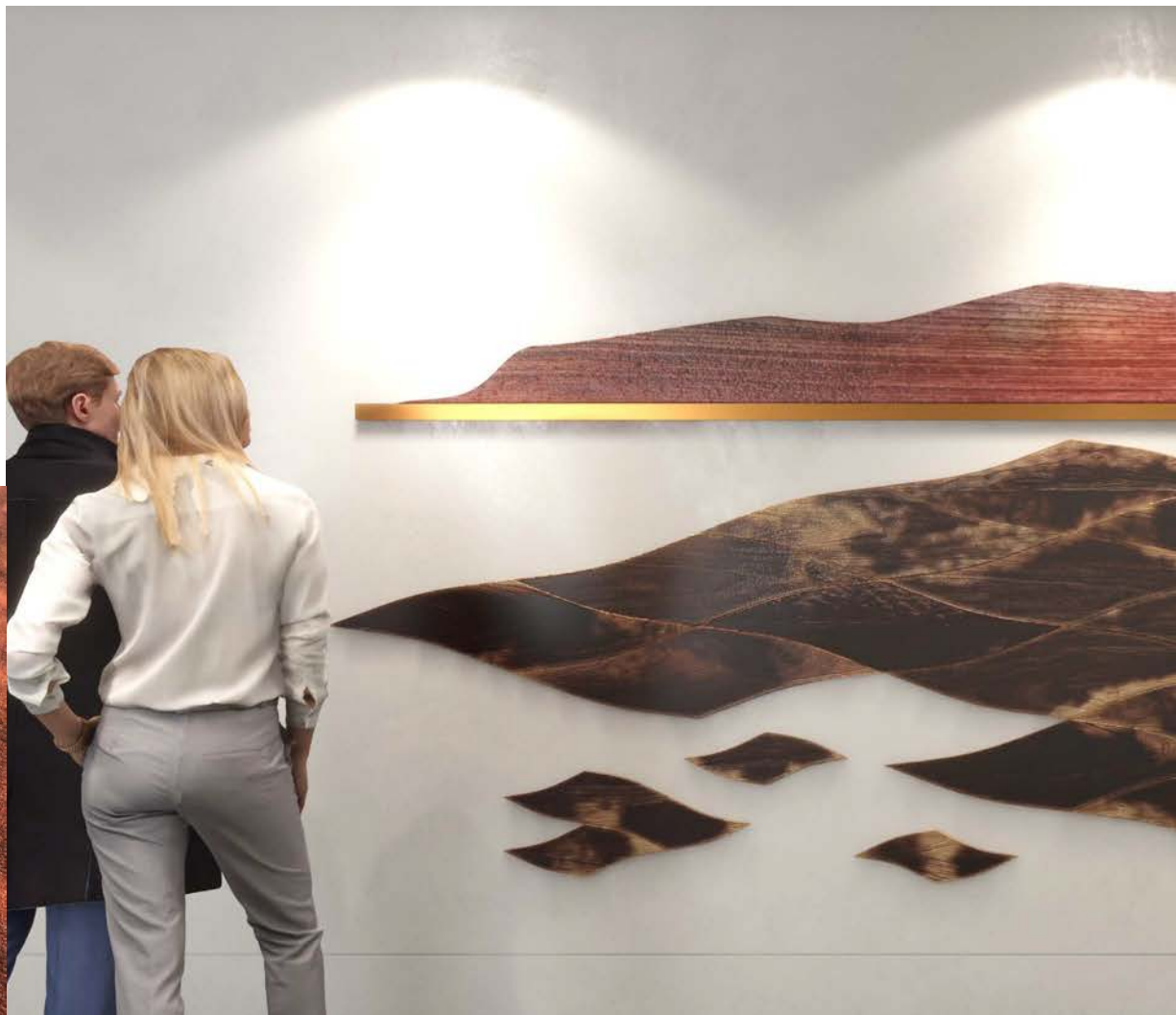
Inspiration from our vibrant and accessible city





It's no surprise that Adelaide ranks in the top 10 of the world's most liveable cities. And its population of around 1.3 million is more than happy to keep schtroom about their park-ringed city, which comfortably straddles the divide between action vs quiet. North Adelaide, the location of M Suites, is characterful and charming, paying homage to heritage while remaining on trend with an array of restaurants, coffee shops and bars.





Enrapturing brilliance

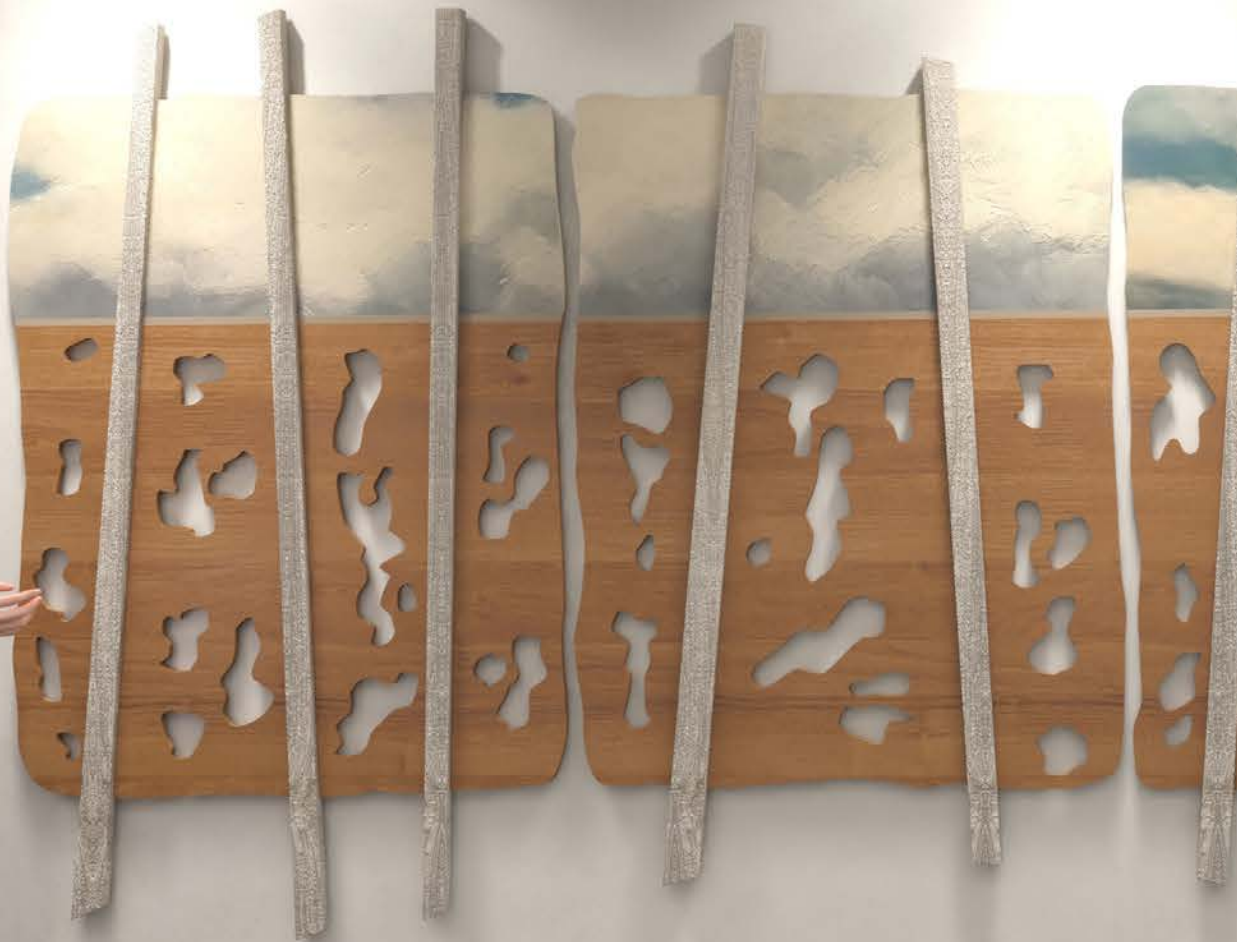
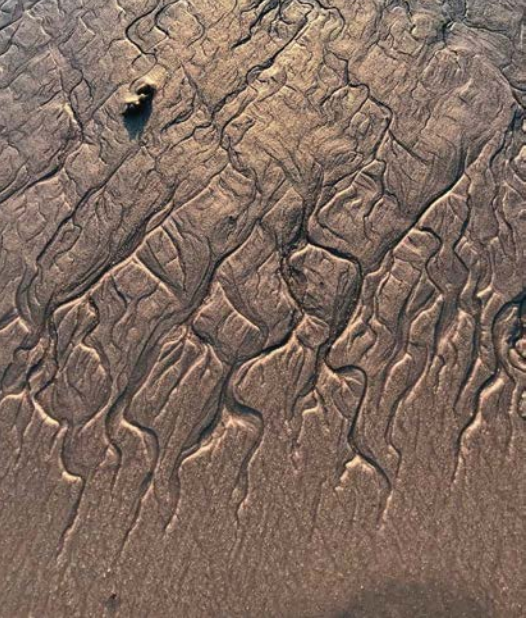
Inspiration from our red earth





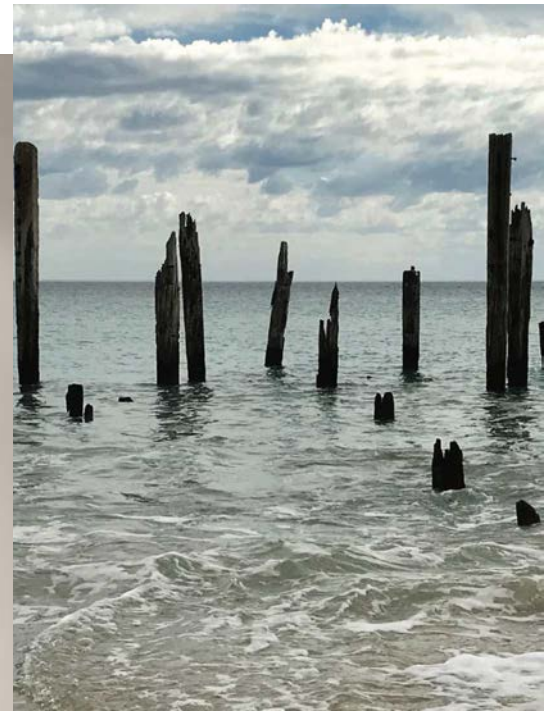
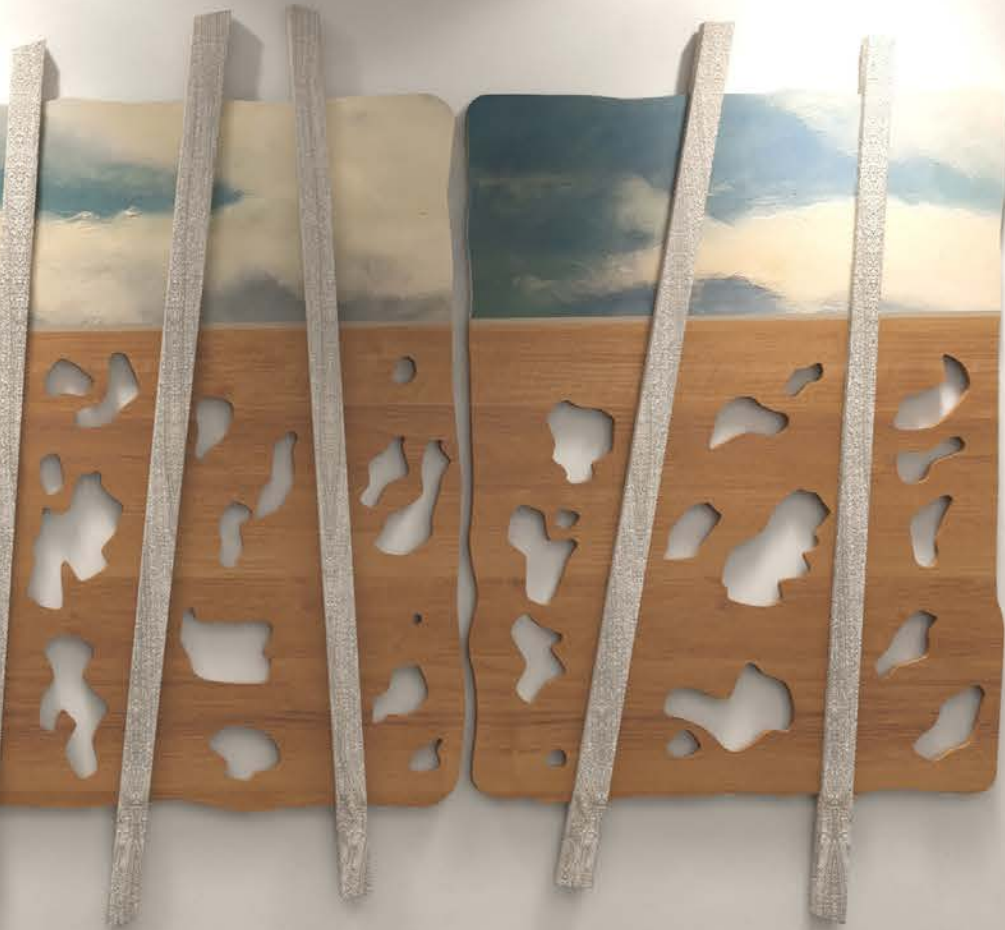
The sparsely populated and harsh country of South Australia's outback has been a subject for poets and an inspiration for artists for generations. The area north of Eyre Peninsula and the Flinders Ranges—with its vast empty spaces—stretches into about 70% of the state, covering the traditional lands of dozens of Indigenous nations. There is some argument as to exactly which areas fall under the term 'outback', but what defines it is simply its remoteness. For poet Leighton Watts, 'The Outback's not a place at all it's the beating of my heart'.

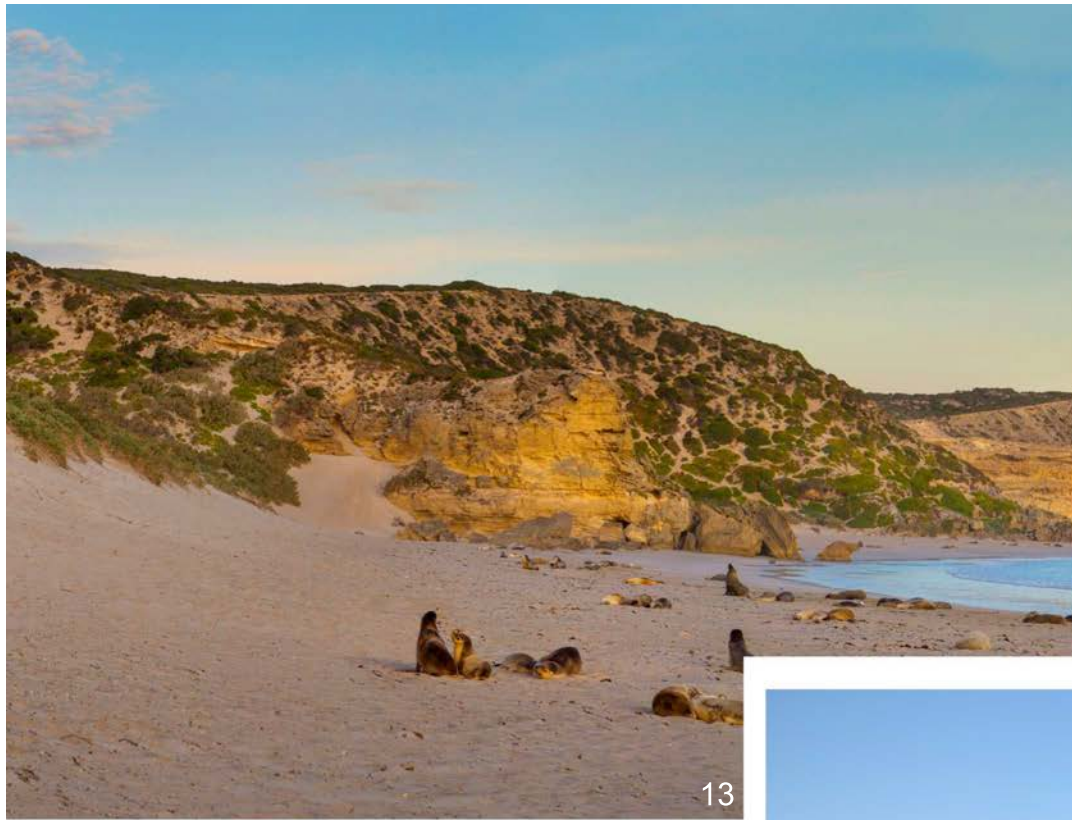




All that remain

Inspiration from our pristine coasts





13



14



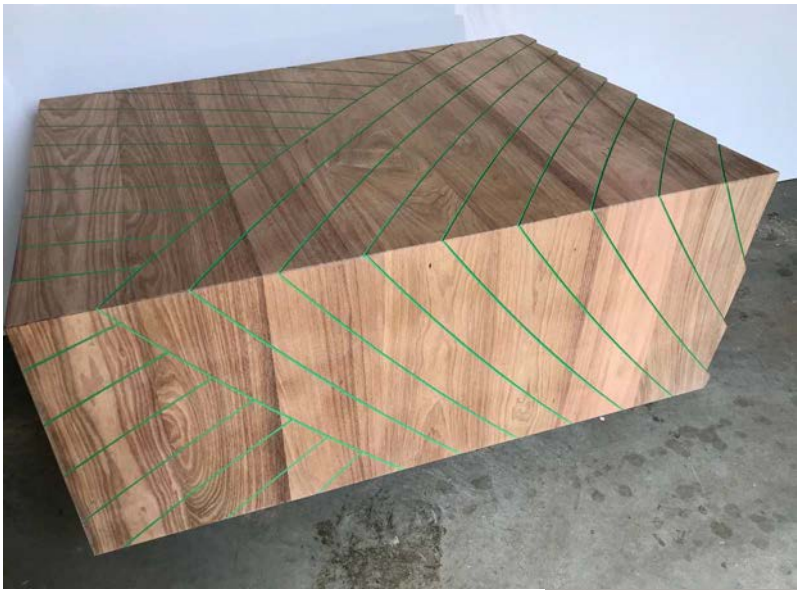
15



16

There are fantastic beaches across South Australia, including Yorke Peninsula, Kangaroo Island and the Limestone Coast. However, even closer to Adelaide (only 45 minutes by car) is the Fleurieu Peninsula, where Port Willunga must rate among the best (and the most photographed). Cliffs, where fishermen once carved out caves to store their boats and nets, overlook its soft sandy beach. Jetty pylons, also known as 'the sticks', are all that remain of the coastal village's early days as a grain port. Just offshore are the rotting timbers of the remains of the *Star of Greece*, a three masted iron cargo ship wrecked in a storm in 1888.





17



Adding flavour

Inspiration from our wine regions





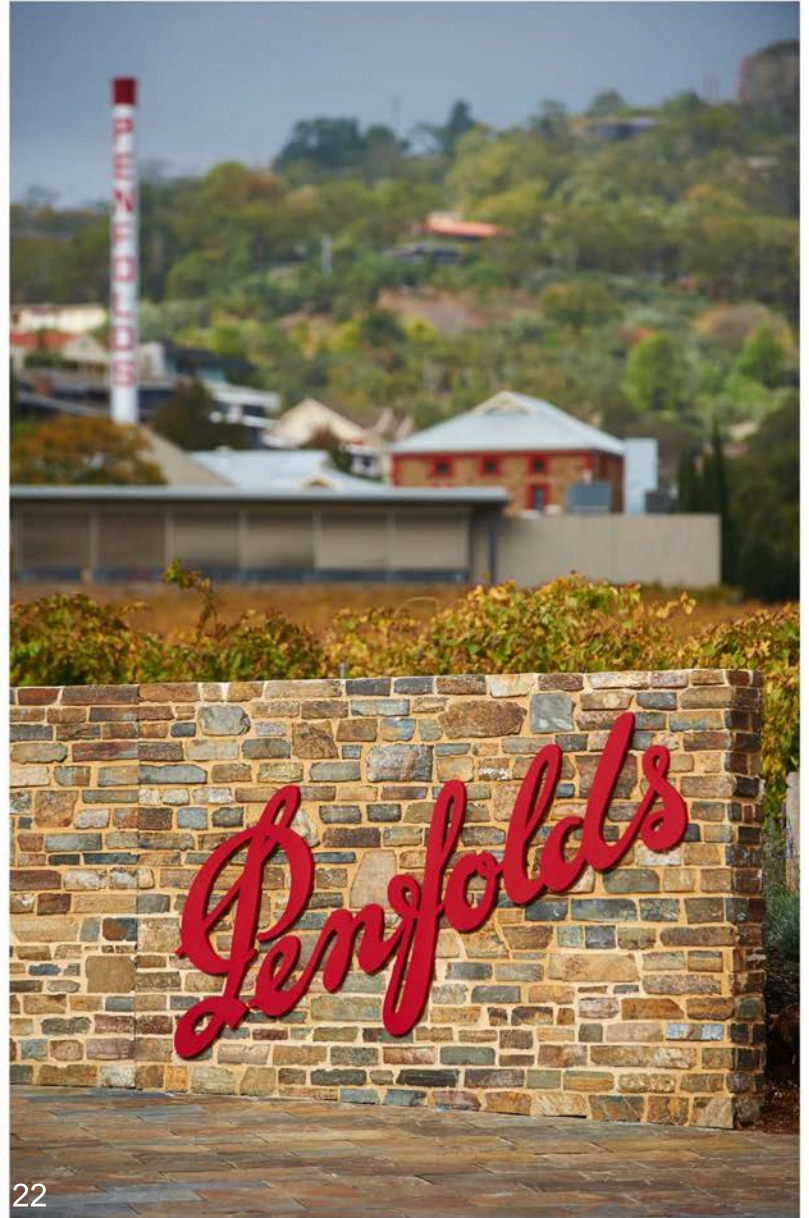
19



20



21



22

This network of global wine capitals shares a common asset: their internationally renowned wine regions. South Australia accounts for more than half of Australia's wine grape production. Australia's most famous wine, South Australia's Penfolds Grange, sells for up to \$40,000 a bottle. South Australia's most notable wine regions include the Barossa Valley, Adelaide Hills, Clare Valley, Fleurieu Peninsula, Coonawarra and the Riverland.





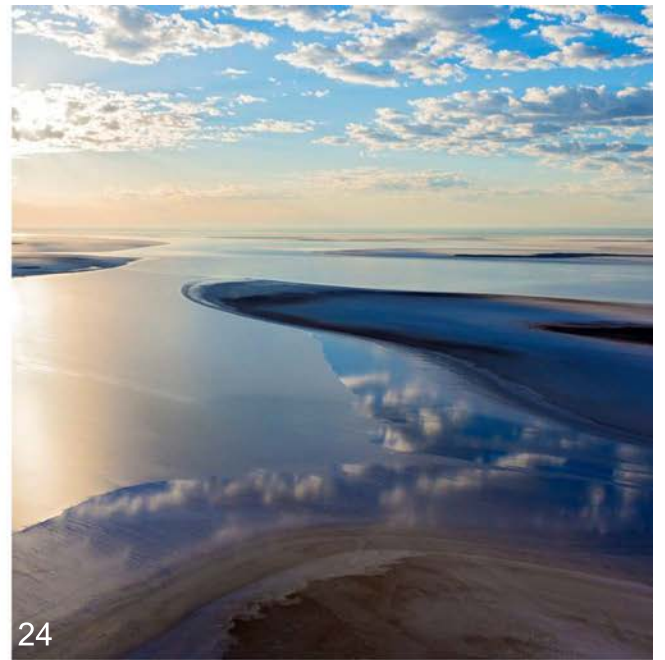
Challenge the laws of time

Inspiration from our ancient outback





23



24



25

Lake Frome, in the north-east of South Australia, is a feature of the Vulkathunha–Gammon Ranges National Park, which forms part of the traditional country of the Adnyamathanha people. The large, shallow unvegetated salt pan is located to the east of the Northern Flinders Ranges and stretches 100 km in length and 40 km in width, with a total surface area of 259,615 hectares. Although called a lake, it only rarely fills with brackish water flowing down usually dry creeks from the Northern Flinders Ranges (in the west), or exceptional flows from the Strzelecki Creek in the north. Access to the lake is via a single, rough four-wheel drive track that traverses flat stony terrain, and crosses over the Moomba–Adelaide natural gas pipeline and the dingo fence before passing over low sand dunes to arrive at the lake's western shore.





26



Australia's greatest waterway

Inspiration from our River Murray





27



28



29



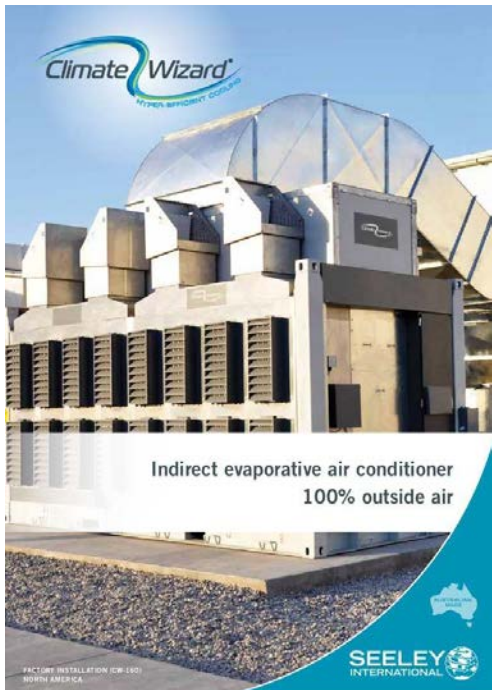
30

The River Murray is Australia's longest river flowing more than 2500 km from the Snowy Mountains in New South Wales, through the Riverland, down to Murray Bridge and on to the Lakes and Coorong in South Australia. It is the life blood of the state, providing essential water for irrigation, industry, domestic and recreational use. Its precious wetlands and floodplains are home to a wide range of native plants and animals, with three wetlands of international significance because of the plants and animals they support. The Murray River meets the ocean in the region of South Australia known as the Coorong, one of the most environmentally sensitive areas of the Basin. The saline water of the Coorong, a 100 km-long shallow brackish lagoon, is separated from the ocean by a narrow sand-dune peninsula. The waters of the Coorong and Murray Mouth estuary are prevented from entering the lakes and the River Murray by a series of barrages built in the 1930s.



An exemplar of energy efficiency

Environmental initiatives—many of them firsts for South Australia—aptly demonstrate the futures thinking embedded into the design and build of M Suites. The rigorous work of environmental engineers combined with more than 40 years of in-house experience and expertise to produce what is expected to be the most energy efficient building in the State's history. For example, the building incorporates a central core where temperatures are controlled using a building management system and leading heat exchange 'climate-wizard' technology to optimise the differences between external and internal temperatures. In effect the core of the building becomes a heat sink, which is economically controlled by the exchange of external air.





Within the apartments themselves, the top-up heating and cooling is via up-to-the-minute inverter-type technology so that very little energy is lost through kitchen and bathroom exhausts. The entire building is double-glazed using high-tech glass and argon vacuum, to minimise heat transfer and provide a high level of sound insulation. The building generally is highly insulated. The latest LED lighting with sensors provide high-quality lighting levels with minimal power use. The building is powered by 330 large solar panels on the roof, backed up by energy from the grid. During the day the system will provide significant energy back into the North Adelaide grid. Water is captured from the roof for reuse within the property.



OLD LION
APARTMENTS
NORTH ADELAIDE

ADDRESS 9 Jerningham Street North Adelaide, South Australia 5006

FOR RESERVATIONS CALL 1800 779 919
+61 8 8360 7192

EMAIL reservations@majestichotels.com.au

WEBSITE www.oldlionapartments.com.au



TYNTE STREET
APARTMENTS
NORTH ADELAIDE

ADDRESS 82 Tynte Street North Adelaide, South Australia 5006

FOR RESERVATIONS CALL 1800 779 919
+61 8 8360 7195

EMAIL reservations@majestichotels.com.au

WEBSITE www.oldlionapartments.com.au



MINIMA
HOTEL
NORTH ADELAIDE

ADDRESS 146 Melbourne Street North Adelaide, South Australia 5006

FOR RESERVATIONS CALL 1800 779 954
+61 8 8360 7194

EMAIL reservations@majestichotels.com.au

WEBSITE www.minimahotel.com.au



ROOF GARDEN
HOTEL
ADELAIDE CITY

ADDRESS 55 Frome Street Adelaide, South Australia 5000

FOR RESERVATIONS CALL 1800 008 499
+61 8 8360 7191

EMAIL reservations@majestichotels.com.au

WEBSITE www.roofgardenhotel.com.au



OASIS
APARTMENTS
PORT AUGUSTA

ADDRESS Marryatt Street Port Augusta, South Australia, 5700

FOR RESERVATIONS CALL 1800 008 648
+61 8 8360 7193

EMAIL reservations@majestichotels.com.au

WEBSITE www.oasisportaugusta.com.au



SOUTH AUSTRALIA



MAJESTIC OLD LION APARTMENTS
'Tranquil manicured garden outlook - with city fringe convenience'



MAJESTIC ROOF GARDEN HOTEL
'Majestic is my hotel of choice in Adelaide'



MAJESTIC TYNTE STREET APARTMENTS
'Private boutique hotel, in cosmopolitan location'



MAJESTIC MINIMA HOTEL
'Like waking up in an art gallery'



MAJESTIC OASIS APARTMENTS
'Incredible setting, where ocean meets the outback'

www.majestichotels.com.au

With Thanks

- | | |
|--|---|
| 1 - SAHMRI Building - Rhys | 16 - Sellicks Hill - Elliot Grafton |
| 2 - City Street - Pratik Gupta | 17 - Vine - Tim Mossholder |
| 3 - Adelaide Oval - Willian Bayreuther | 18 - Vineyard Aerial - Alex Wigan |
| 4 - WOMADelaide - Tourism Australia | 19 - d'Arenberg Cube - South Australian Tourism Commission |
| 5 - Central Market - South Australian Tourism Commission | 20 - Seppeltsfield Winery - Daniel Westergren |
| 6 - Adelaide Convention Centre - Adelaide Convention Centre | 21 - Riesling Trail - Skillogalee Winery - South Australian Tourism Commission |
| 7 - Leigh Street - South Australian Tourism Commission | 22 - Penfolds Magill Estate - South Australian Tourism Commission |
| 8 - Sand Dunes - South Australian Tourism Commission | 23 - Kati Thanda-Lake Eyre National Park, Wrightsair Scenic Flight - South Australian Tourism Commission |
| 9 - Port Augusta - Georgie Sharp | 24 - Lake Frome - South Australian Tourism Commission |
| 10 - Alligator Gorge - Angus Mountjoy | 25 - Kati Thanda-Lake Eyre National Park scenic flight - Peter Rowe |
| 11 - Wilpena Pound - South Australian Tourism Commission | 26 - Looking down at moored houseboats on shores of beautiful Murray River in South Australia - Greg Brave |
| 12 - Weathered Wood - Markus Spiske | 27 - River Landscape - South Australian Tourism Commission |
| 13 - Seal Bay Conservation Park - South Australian Tourism Commission | 28 - Shack Jetty - South Australian Tourism Commission |
| 14 - Emu Bay - Isaac Forman, Serio | 29 - Wilkadene Above Renmark Houseboats - South Australian Tourism Commission |
| 15 - Sellicks Hill - Peter Barnes | 30 - PS Industry - South Australian Tourism Commission |

M SUITES



202 Tynte Street North Adelaide, South Australia 5006

1800 950 500

+61 8 7089 7888

reservations@majestichotels.com.au

www.majesticmsuites.com.au